

USB Flash Memory TransMemory™

- Driver Installation Manual -

TOSHIBA

Table of Contents

Chapter 1: Introduction	3
Chapter 2: Required System Configuration	4
Chapter 3: Installing the TransMemory™ Driver	5
1. Installing the TransMemory™ Driver	5
1.1 Installation using Windows® 98SE	5

Chapter 1: Introduction

Thank you for purchasing Toshiba USB Flash Memory (TransMemory™).

The product has the following features:

- The TransMemory™ is based on Toshiba's NAND flash technology. It can be used as a removable disk for a personal computer.
- The TransMemory™ employs Security Software, allowing data that has been saved in the memory to be password-protected. The Security Software can be downloaded from the Toshiba Website (www.toshiba-cards.de).
- Since the TransMemory™ is bus-powered, an AC power adapter is not required.

Please note:

- You can make full use of data that you have saved, but under copyright law, which means the rights of copyright holders may not be violated.

This document describes how to install the TransMemory™, how to use it, and relating information. In order to use the product correctly, please be sure to read the manual before use.

Trademarks

- Microsoft® and Windows® are trademarks of Microsoft Corporation registered in the United States and other countries.
- Macintosh® and Mac OS® are trademarks of Apple Computer, Inc.
- The USB logo is a trademark.
- Other companies and products mentioned herein are trademarks or registered trademarks of their respective owners.

Chapter 2: Required System Configuration

The following requirements are necessary to install the TransMemory™ Driver:

- Required hardware:
USB Specification-compliant USB port
(Operation on self-built or modified PCs cannot be guaranteed)
- Required operating system:
Microsoft Windows® 98 Second Edition

There is no need to install the TransMemory™ Driver when using the following operating systems:

- Microsoft Windows® Millennium Edition
- Microsoft Windows® 2000 Professional
- Microsoft Windows® XP Home Edition
- Microsoft Windows® XP Professional
- MacOS9.0® or higher

Chapter 3: Installing the TransMemory™ Driver

This chapter describes how to install the TransMemory™ Driver in order to use this product.

Be sure to install it correctly in accordance with the following explanation:

1. Installing the TransMemory™ Driver

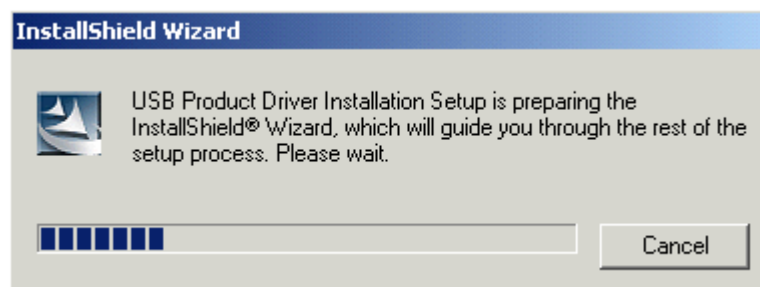
Be sure to install the driver before connecting TransMemory™ to the computer.
When installing please close all other applications.

1.1 Installation using Windows® 98SE

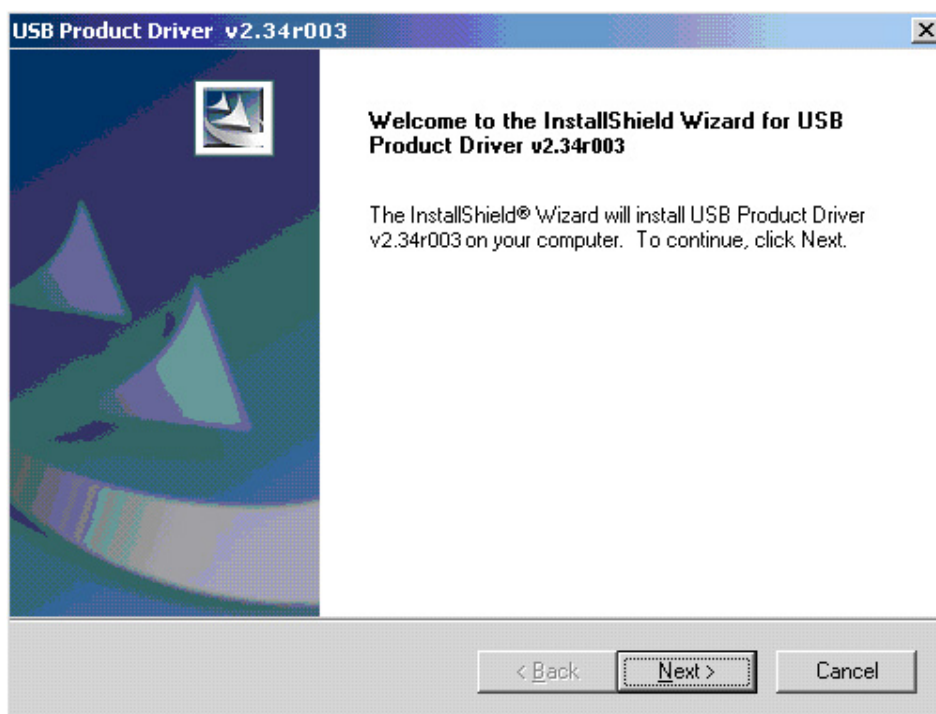
- 1) Start up Windows® 98SE.
- 2) Double click on downloaded executable file:
"Toshiba_TransMemory_WinSE98_Driver.exe"



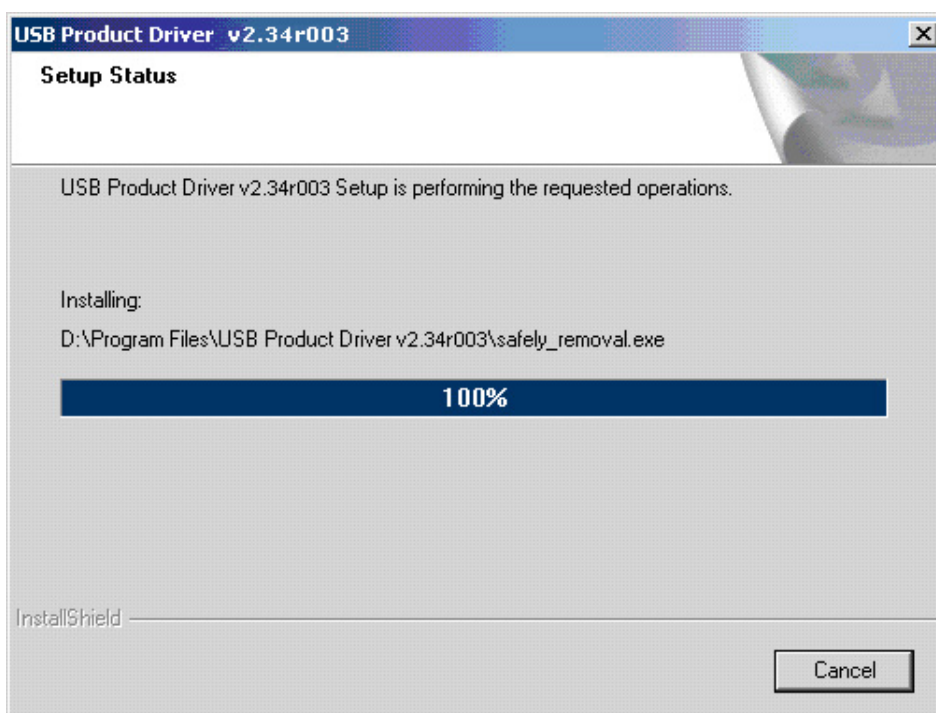
- 3) The driver installation program starts up. The following dialog box appears:



- 4) When the following dialog box appears, click on "Next" (N).

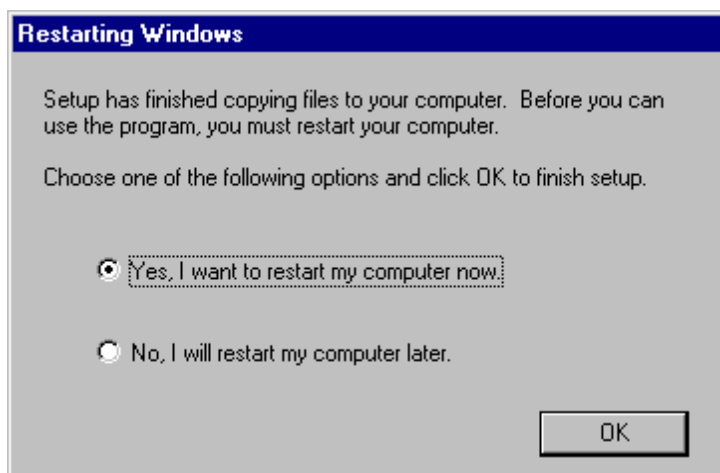


The following dialog box appears, then automatically disappears.



5) When the following dialog box appears, click on "OK".

That completes the installation of the TransMemory™ Driver.



After Restart insert the TransMemory™ into the USB port of the PC.

Dialog boxes relating to new hardware will repeatedly appear on the screen, but you do not need to interact.

When the dialog boxes cease to appear, the TransMemory™ can be used.

If TransMemory™ is inserted into the USB port of the PC without following steps 1) - 5), the following dialog box appears. In that case, click on "Cancel" and repeat the procedures beginning with step 1).



That completes the installation. Once the driver is installed, the computer will automatically recognize TransMemory™ when it is connected, and it can be used.

After finishing the installation, the TransMemory™ executable file named "Toshiba_TransMemory_Win98SE_Driver.exe" may be deleted.

