

USB Flash Memory TransMemory™

Security Software Installation Manual

Toshiba

Table of Contents

Chapter 1: Introduction.....	2
Chapter 2: Required System Configuration.....	3
Chapter 3: How to Install the Security Software.....	4
1. Installing the security software.....	4
1.1 Installing the security software.....	4
Chapter 4: How to Use the Security Software.....	9
1. Starting up the security software and formatting.....	9
1.1 Starting up the security software.....	9
1.2 Formatting using the security software.....	13
2. Changing the Security Software Password and Log In/Log Out.....	16
2.1 Changing the password using the security software.....	16
2.2 Logging into the Privacy Zone using the security software.....	20
2.3 Logging out of the Privacy Zone using the security software.....	21

Chapter 1: Introduction

Thank you for purchasing USB flash memory (TransMemory™). It has the following features.

- It is USB flash memory employing Toshiba's NAND flash memory. It can be used as a removable disk for a personal computer.
- It employs security software, allowing data that has been saved in the memory to be password-protected.
- Since it is bus-powered, an AC power adapter is not required.

※ You can make full use of data that you have saved, but under copyright law, the rights of copyright holders may not be violated.

This document describes how to install TransMemory™, how to use it, and other information. Before using the product, be sure to read it thoroughly to ensure correct use.

T r a d e m a r k s

- Microsoft® and Windows® are trademarks, registered in the United States and other countries, of Microsoft Corporation of the U.S.
- Intel® and Pentium® are trademarks or registered trademarks of Intel Corporation in various nations.
- The USB logo mark is a trademark.
- Other companies and products mentioned herein are trademarks or registered trademarks of their respective owners.

Chapter 2: Required System Configuration

The following are required to properly operate this product:

- Required hardware

- CPU: Intel Pentium II 266MHz or higher
 - Available hard disk space of at least 800 KB
 - USB Specification-compliant USB port
- (Operation on self-built or modified PCs cannot be guaranteed.)

- Required operating systems

- Microsoft® Windows® 98 Second Edition
- Microsoft® Windows® Millennium Edition
- Microsoft® Windows® 2000 Professional
- Microsoft® Windows® XP Professional
- Microsoft® Windows® XP Home Edition

For Microsoft® Windows® 98 Second Edition , be sure to first install the required driver.

For Microsoft® Windows® XP or Microsoft® Windows® 2000 , be sure to first log in as a user belonging to the Administrators group. If attempting to log in as a User, an error may result.

The product does not work with any operating system other than Microsoft® Windows®.

Chapter 3: How to Install the Security Software

This chapter describes how to install the security software to use this product. Be sure to install it correctly in accordance with the following explanation.

1. Installing the security software

Be sure to install the security software when TransMemory™ is connected to the computer. Close all other applications.

1.1 Installing the security software

- 1) Start up the computer.
- 2) Access the Web download page.
- 3) Double click on the applicable file.
- 4) Click on Save (S) in the dialog box.
- 5) A dialog box asking where the software is to be saved appears. Select Desktop.
- 6) When the download is complete, a dialog box saying the download is complete appears. Click on Close.

TOSHIBA

Security Software Installation Manual

7) On the desktop, the downloaded software named “Toshiba_TransMemory_SecuritySoft.exe” appears as a new executable file. Double click on the icon.



8) The security software installation program starts up. When the following dialog box appears, confirm that the Destination (D) is the desktop, and click on Install.



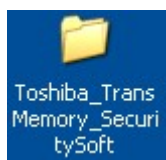
TOSHIBA

Security Software Installation Manual

If the Destination (D) is not the desktop, click on Browse (W). The following dialog box appears, so select Desktop as the destination folder.



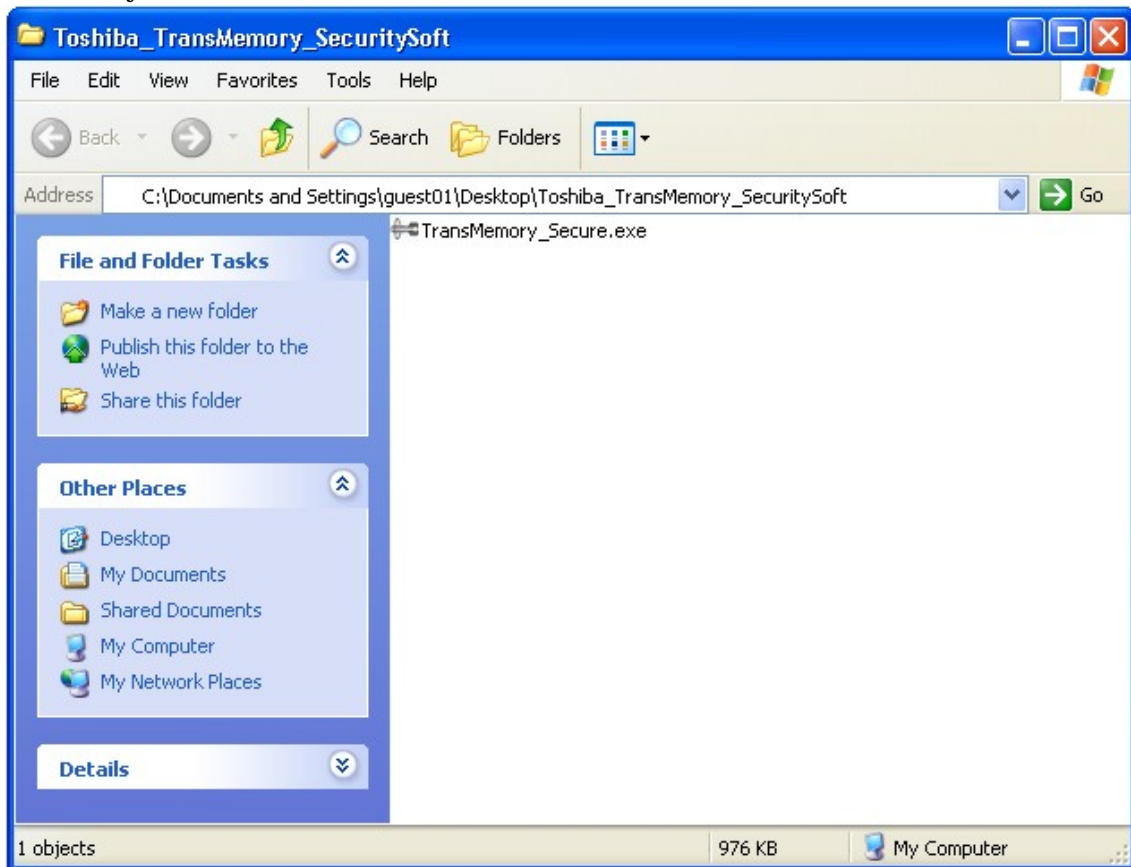
9) The following folder appears.



10) Opening the folder displays the following.

TOSHIBA

Security Software Installation Manual



That completes the installation. Once it is installed, it can be used in the future by double clicking on the TransMemory_Secure.exe icon in the Toshiba_TransMemory_SecuritySoft folder.

After completing installation, the executable file, Toshiba_TransMemory_SecuritySoft.exe may be deleted.



Chapter 4: How to Use the Security Software

This chapter describes how to use the security software for using TransMemory™. Be sure to follow the instructions for correct installation.

1. Starting up and formatting the security software

Be sure to start up and format the security software when TransMemory™ is connected to the personal computer.

1.1 Starting up the security software

1) Double click on the TransMemory_Secure.exe security software icon to start up the security software.



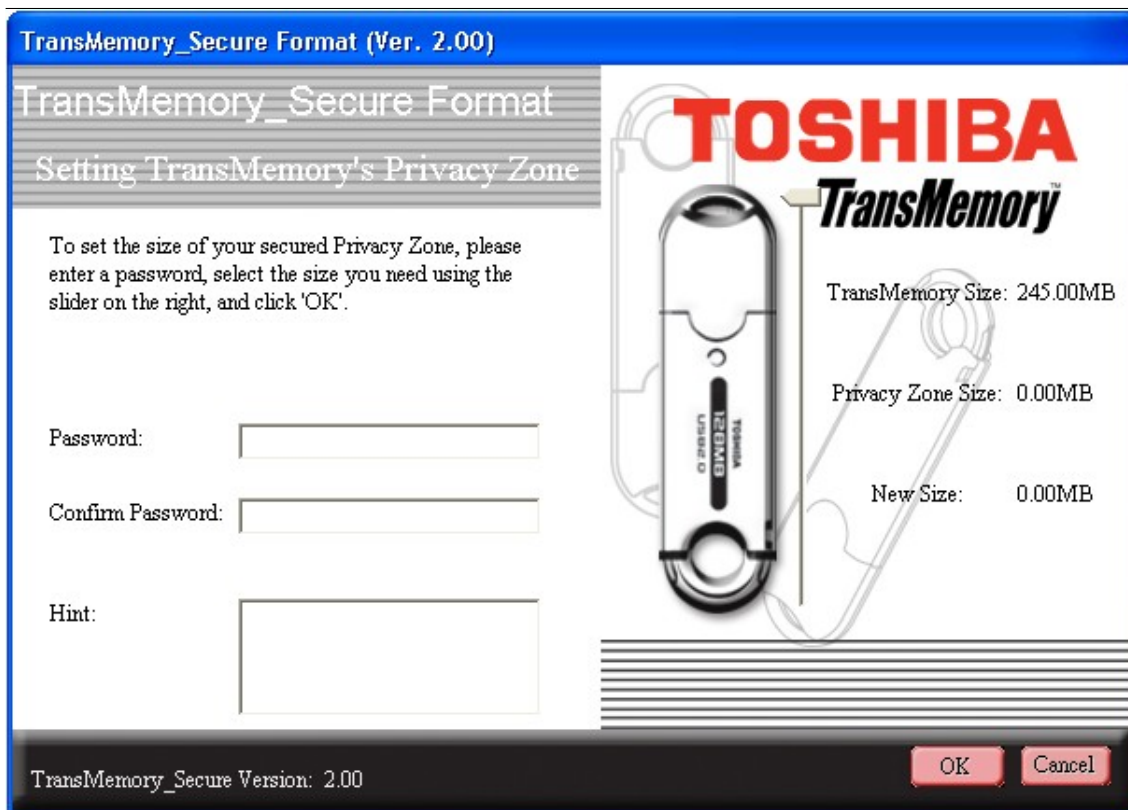
2) When the following dialog box appears, confirm and click on OK.



The following dialog box appears.

TOSHIBA

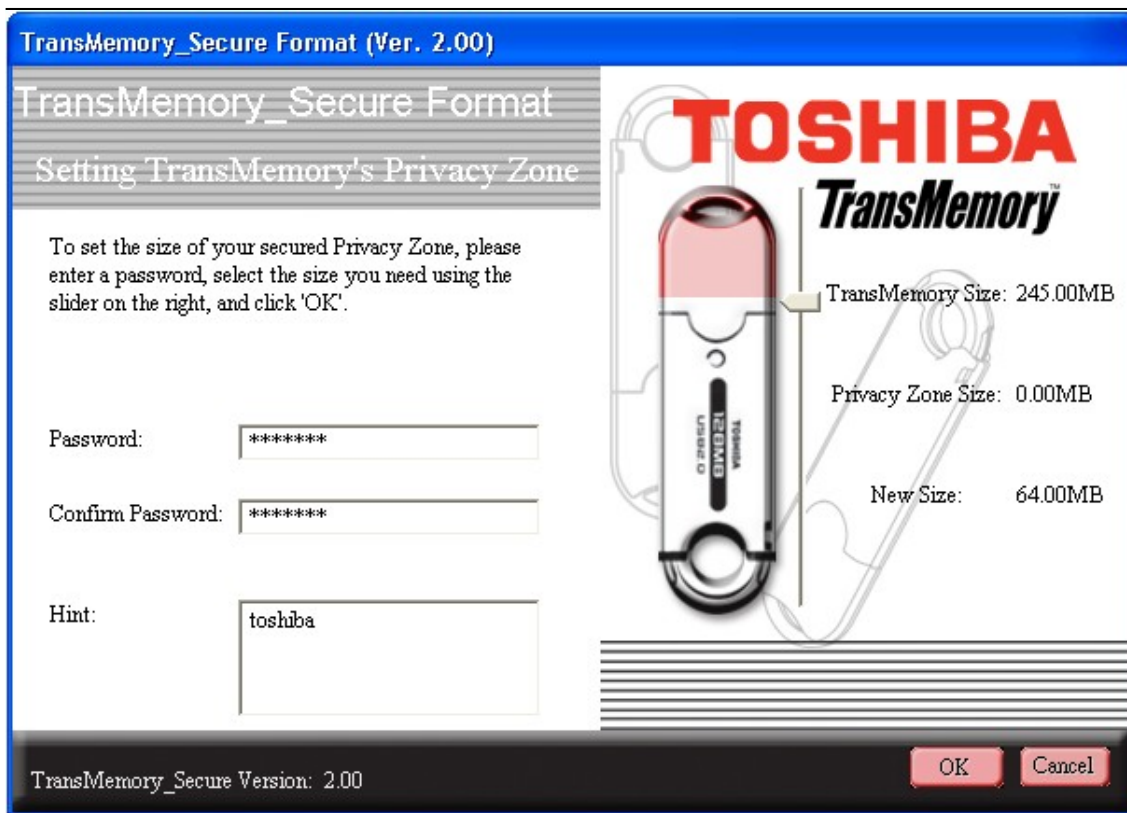
Security Software Installation Manual



- 4) Slide the partition to determine the size of the Privacy Zone. Enter the password, reenter the password for confirmation, then a hint, and click on OK.

TOSHIBA

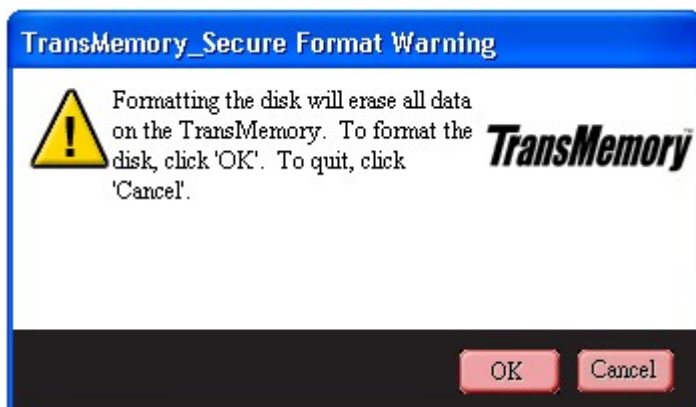
Security Software Installation Manual



Note:

If you forget the password, you will not be able to log into the Privacy Zone. A forgotten password cannot be found. In that case, use the formatting function of the security software and set a new password in Reformat. Note, however, that all data will be lost. When formatting using the computer's format command, only the Public Zone will be formatted, but not the Privacy Zone.

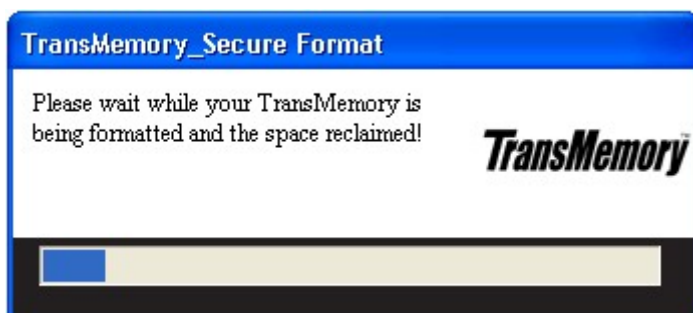
5) When the following dialog box appears, confirm and click on OK.



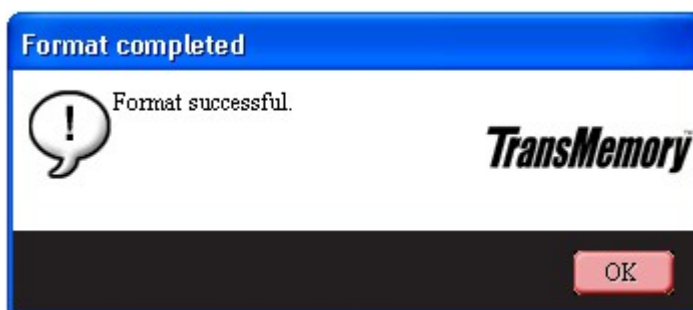
TOSHIBA

Security Software Installation Manual

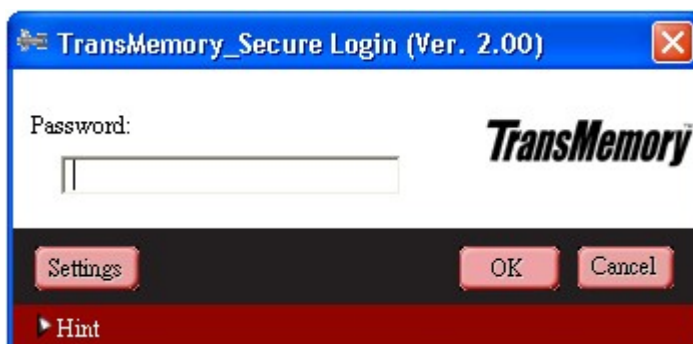
The following dialog box appears.



6) When the following dialog box appears, confirm and click on OK.



The following dialog box appears.



TOSHIBA

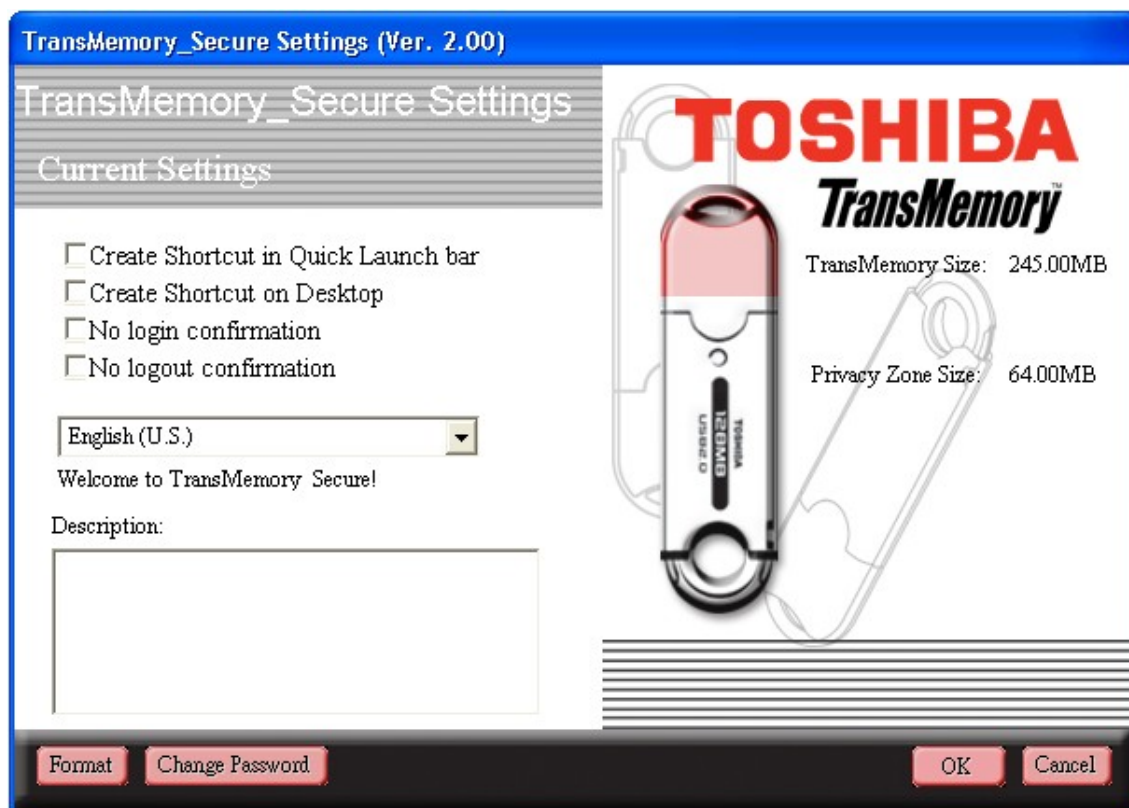
Security Software Installation Manual

1.2 Formatting using the security software

1) When the following dialog box appears, click on Setup.



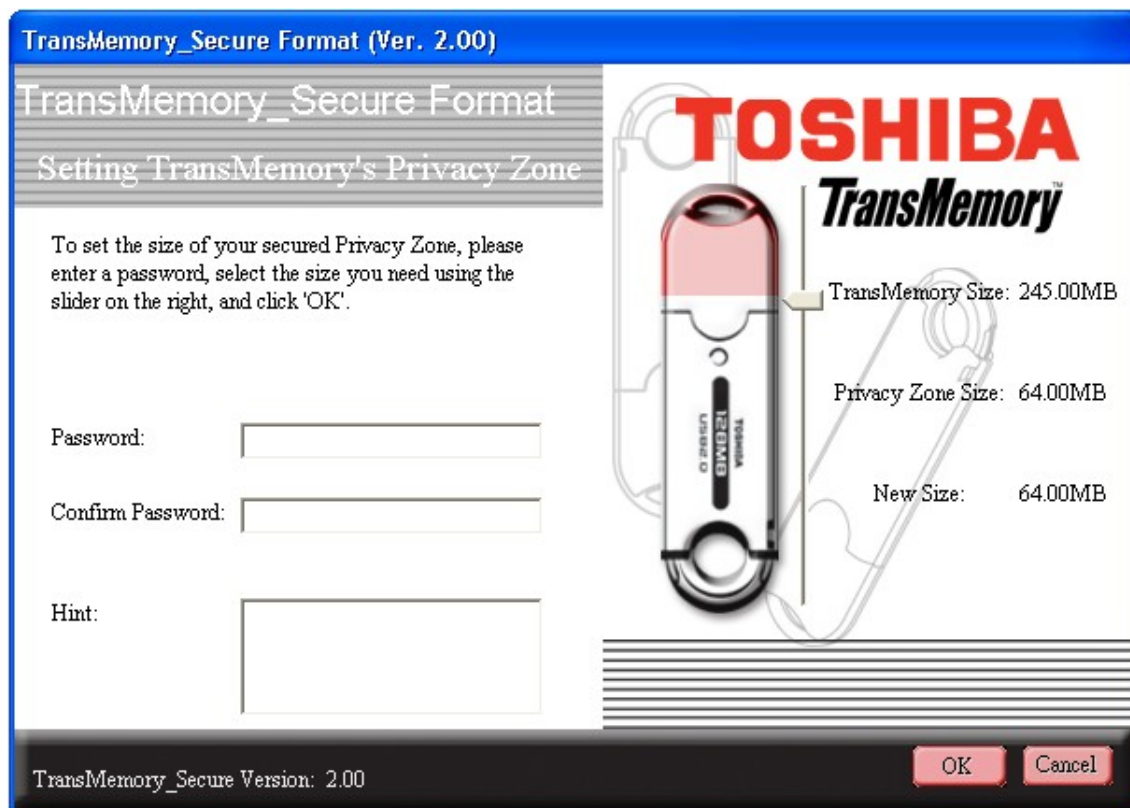
2) When the following dialog box appears, click on Format.



TOSHIBA

Security Software Installation Manual

- 3) When the following dialog box appears, slide the partition to determine the size of the Privacy Zone. Enter the password, reenter the password for confirmation, then a hint.

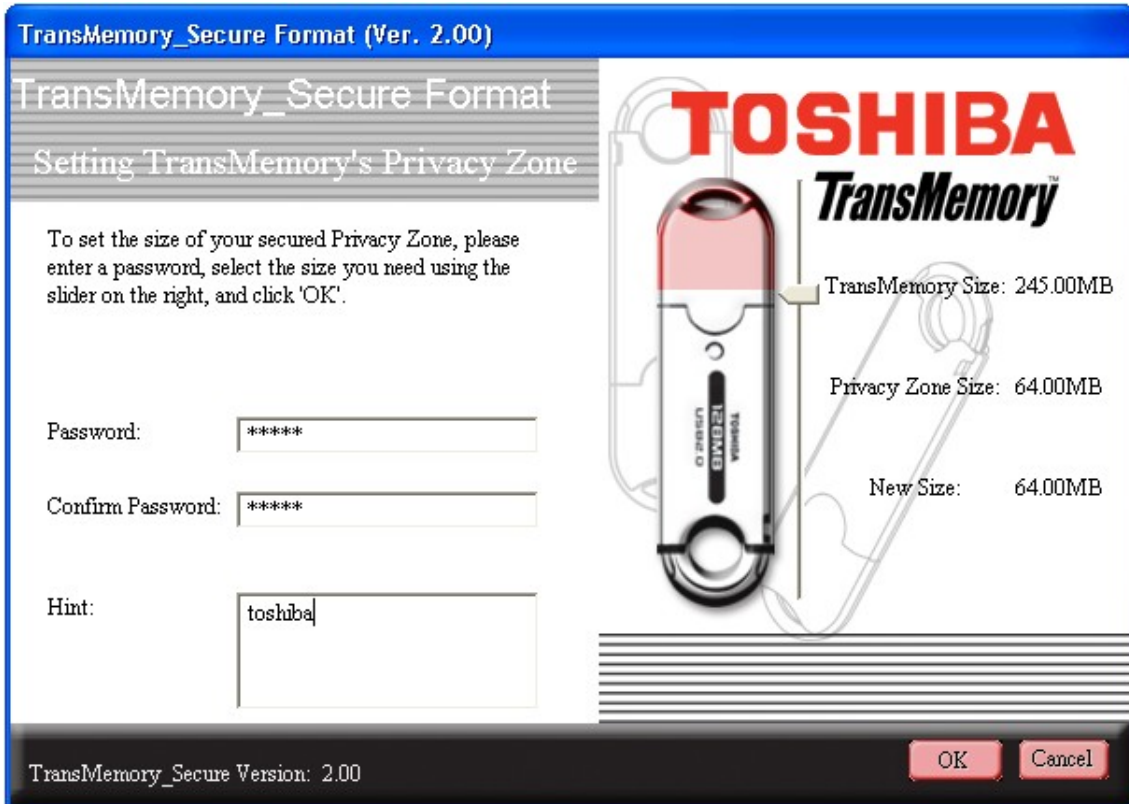


Note that the size of the Privacy Zone is limited to a maximum of 90% of the available memory (user area). The pink area is the Privacy Zone.

TOSHIBA

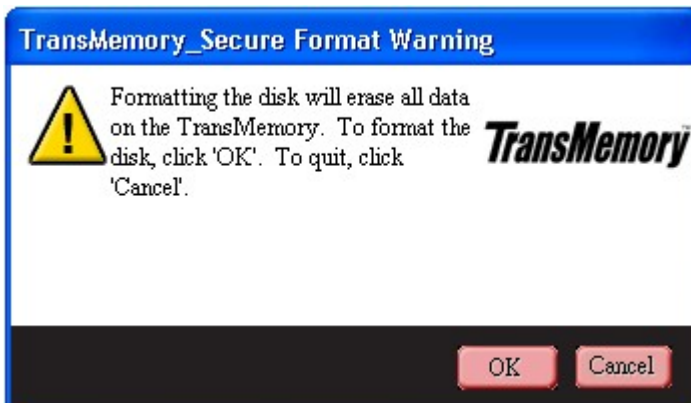
Security Software Installation Manual

- 4) Determine the size of the Privacy Zone. Enter the password, reenter the password for confirmation, then a hint, and click on OK.



Note: The password is a maximum of 16 characters using half-width alphanumerics (case sensitive).

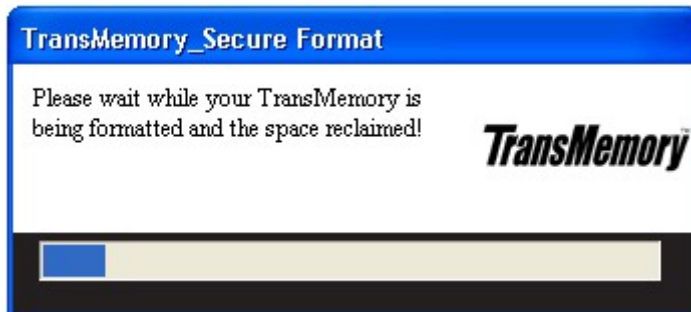
- 5) When the following dialog box appears, confirm and click on OK.



TOSHIBA

Security Software Installation Manual

6) The following dialog box appears.



7) When the following dialog box appears, confirm and click on OK to complete formatting.

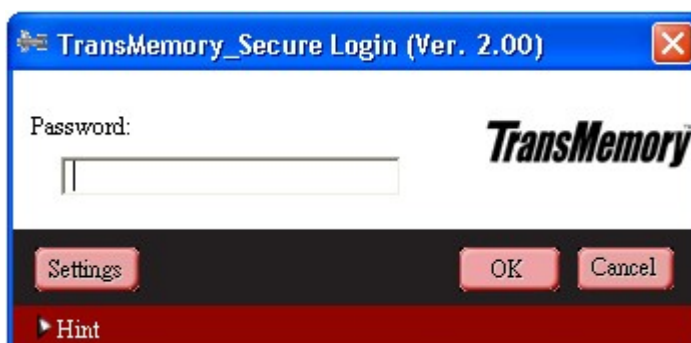


2. Changing the Security Software Password and Log In/Log Out

Be sure to make security software password changes and login/log out when TransMemoryTM is connected to the computer.

2.1 Changing the password using the security software

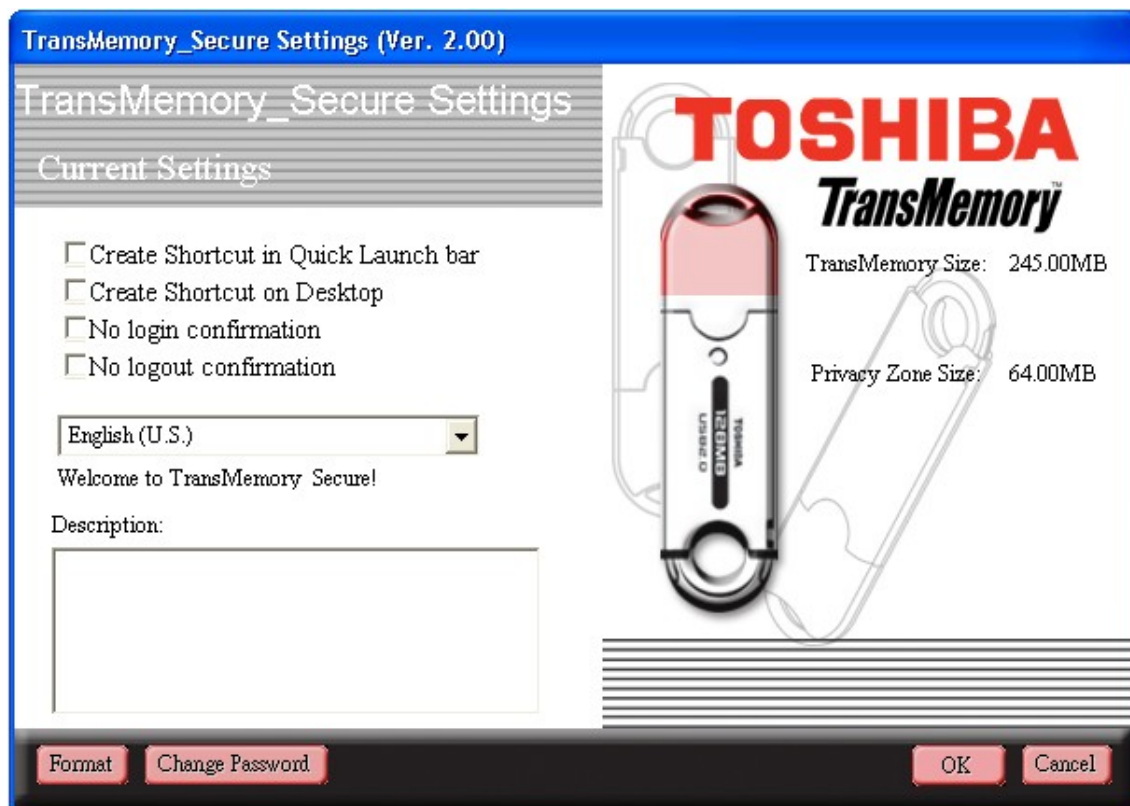
1) When the following dialog box appears, click on Setup.



TOSHIBA

Security Software Installation Manual

2) When the following dialog box appears, click on Change password.



TOSHIBA

Security Software Installation Manual

- 3) When the following dialog box appears, enter the old password, then the new password, reenter the new password for confirmation, then a hint.



TransMemory_Secure (Ver. 2.00)

To modify your password, please enter your current password, and then enter your new password in the fields provided. You may also enter a new hint for your new password. Click 'OK' to apply the changes or 'Cancel' to keep the current password.

TransMemory

Old Password:

New Password:

Confirm New Password:

Hint:

OK Cancel

TOSHIBA

Security Software Installation Manual

- 4) When the old password, new password, new password confirmation, and hint have been entered, click on OK.

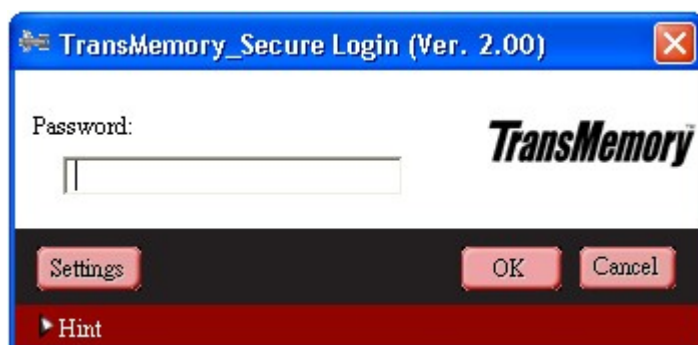


- 5) When the following dialog box appears, confirm and click on OK.

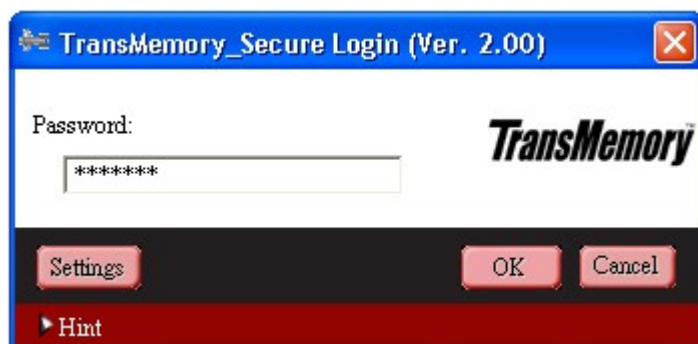


2.2 Logging into the Privacy Zone using the security software

1) When the following dialog box appears, enter the password.



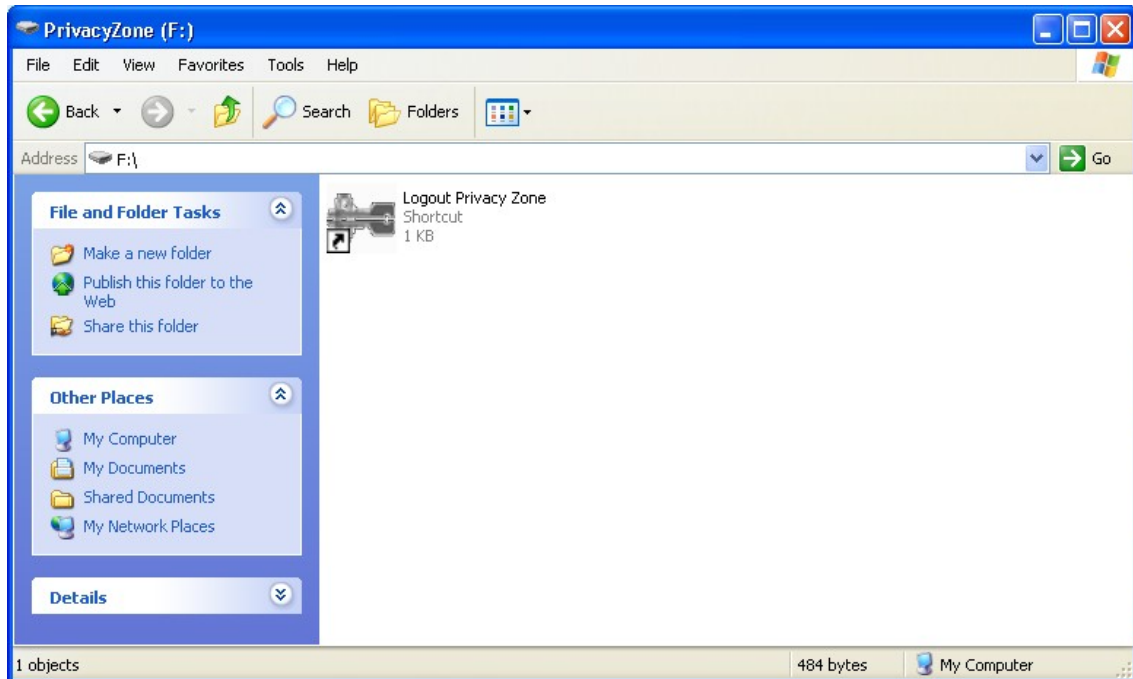
2) When the password has been entered, click on OK.



3) When the following dialog box appears, confirm and click on OK.



4) When the following dialog box appears, logging into the Privacy Zone is complete.



2.3 Logging out of the Privacy Zone using the security software

1) Double click on Logout Privacy Zone to log out.



2) When the following dialog box appears, click on OK.

