

How to enable DOS Support for Programs from ROSE SWE?

Deutsche Beschreibung ebenfalls enthalten!

Table of Contents

English Instructions.....	1
First Step – Install NTVDM.....	1
Second – Enable Legacy Console.....	2
Still not running due to SmartScreen?.....	4
vDosPlus.....	4
Deutsch.....	4
Schritt Eins – Installation der NTVDM.....	5
Schritt Zwei – Legacy Console aktivieren.....	5
Pointers/Web Pages.....	7

Some older programs (VirScan Plus, RHBVS, ViBa, CrCheck and AntiLink) from ROSE SWE are provided as DOS binaries, therefore they may need some setup to run on Windows, 32bit.

English Instructions

Important: Your **Windows 10 64bit** version doesn't support DOS applications anymore. Previous Windows 32-bit versions included [NTVDM](#), facilitating DOS programs to run. This guide describes how to install NTVDM under Windows 32bit (7, 8.0, 8.1, 10 and 11).

For 64bit environments you can use for example vDOS.

First Step – Install NTVDM

Either start a DOS program by simply double clicking on it

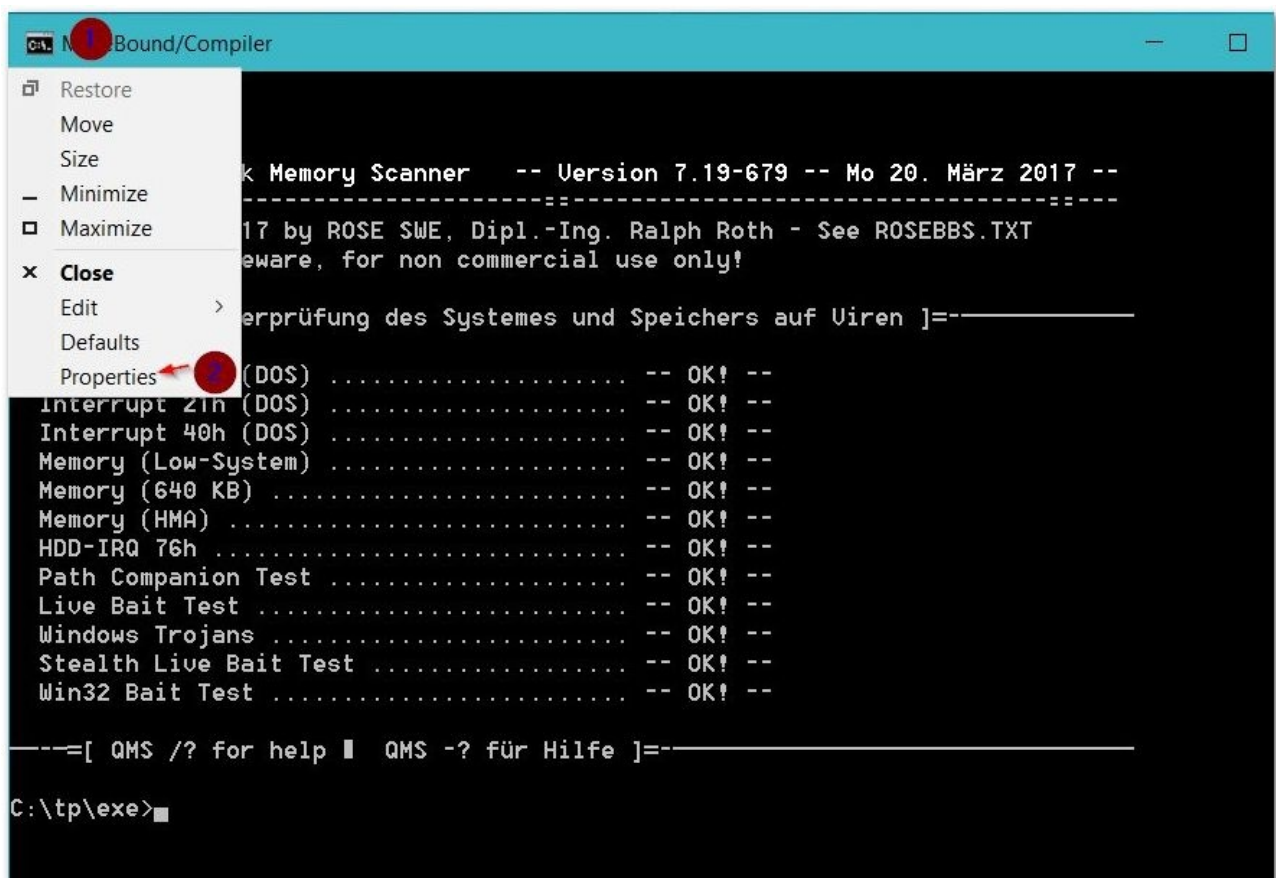
or

Programs and Features -> Turn Windows Features on or off -> Legacy Components -> Enable NTVDM

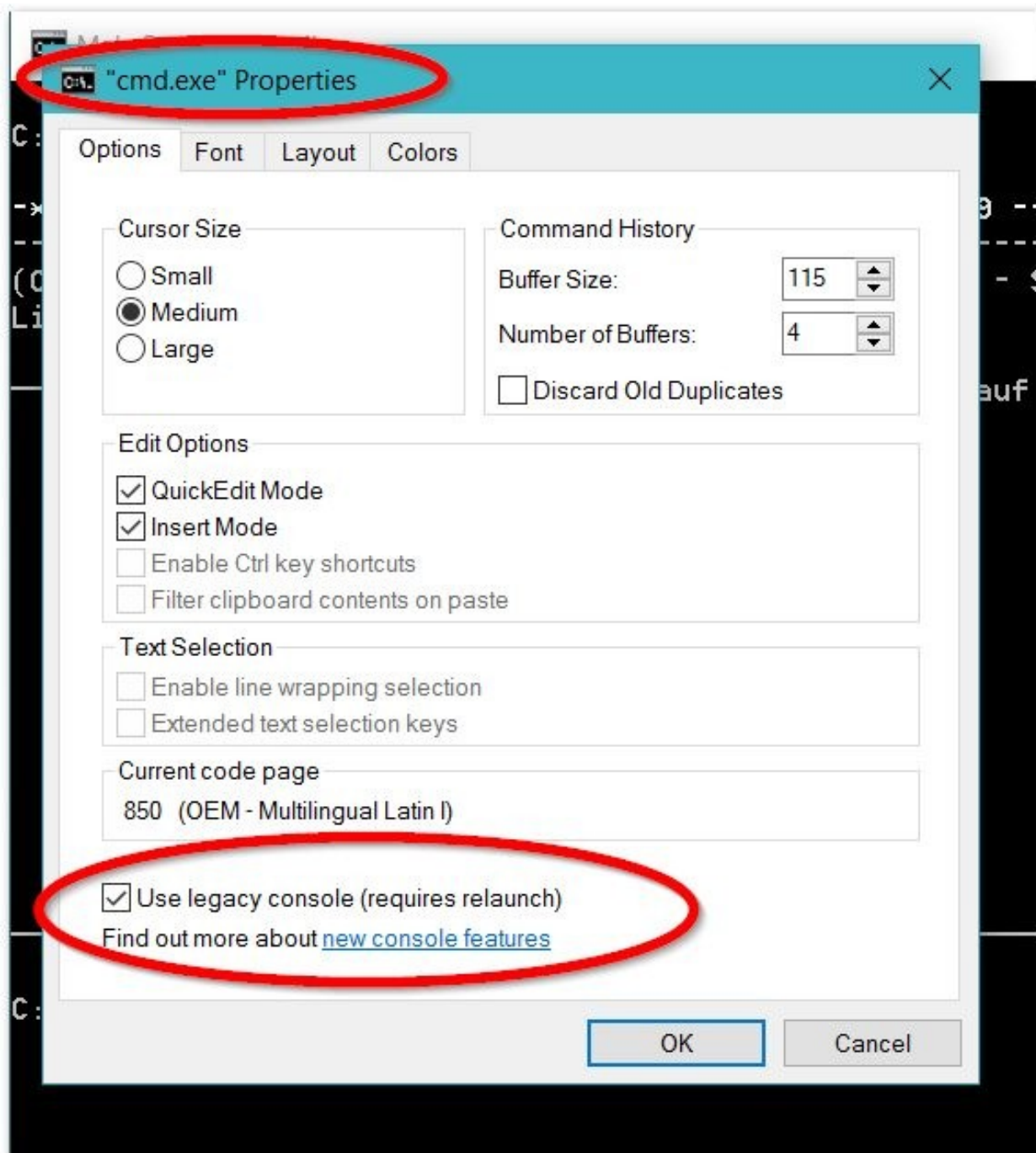
Second – Enable Legacy Console

Open "Command prompt"

Right click over title (1) "Command prompt" and select "Properties" (2)

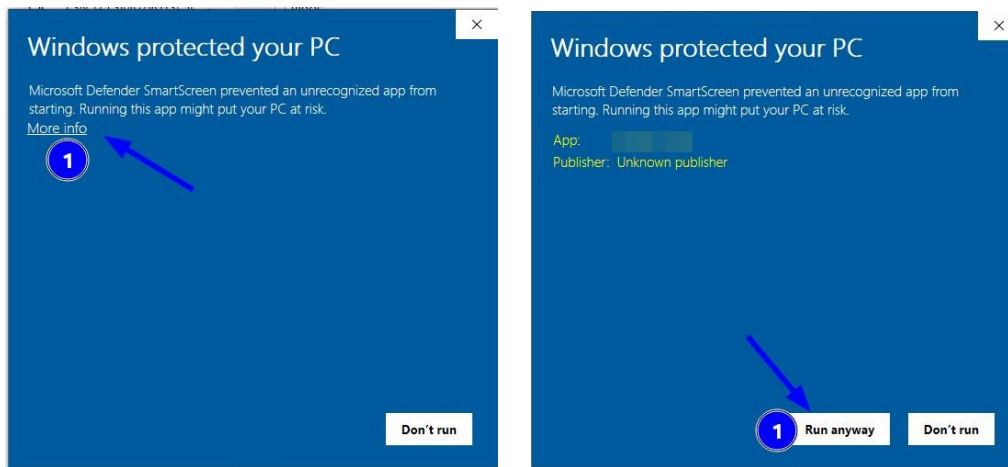


Select "Use legacy console (requires relaunch)", then "Accept"
Close and re-open "Command prompt" to test.



See also: https://answers.microsoft.com/en-us/insider/forum/insider_wintp-insider_update/16-bits-applications-not-working-at-all/a776a720-ff62-4848-96b1-81b4371cff2c?page=3 and <https://technet.microsoft.com/en-us/library/mt427362.aspx>

Still not running due to SmartScreen?



If you see the message Windows Defender SmartScreen prevented an unrecognized program from starting when you run an installer or double-click an executable, you can resolve this by clicking the "**More Info**" link in the dialogue box, and then clicking "**Run anyway**".

vDosPlus

Home page = <http://vdosplus.org/>

vDosPlus (formerly vDos-lfn) is a general purpose non-gaming DOS emulator for Windows, based on vDos and DOSBox. vDosPlus is designed to run non-gaming DOS applications on all current versions of Windows. NTVDM (NT Virtual DOS Machine) is included in 32-bit Windows, but NOT in 64-bit Windows. However, most of today's Windows is now 64-bit, and to run DOS programs you need a DOS emulator. vDosPlus is for this purpose, and like the original vDos, it provides advanced features such as support for file locking (needed by multi-user applications) and printing to Windows-only (GDI) printers, but it also has many unique features such as tighter integration with Windows and improved keyboard, mouse and display support. Formerly known as vDos-lfn because of its initial focus on adding support for Windows-style long file names, or LFNs, in addition to the traditional DOS 8.3 file names, it is now much more with a wide range of additional features. It is based on mature projects and also well tested by the XyWrite community and many normal or power users of various DOS applications, so it should be considered quite stable.

Deutsch

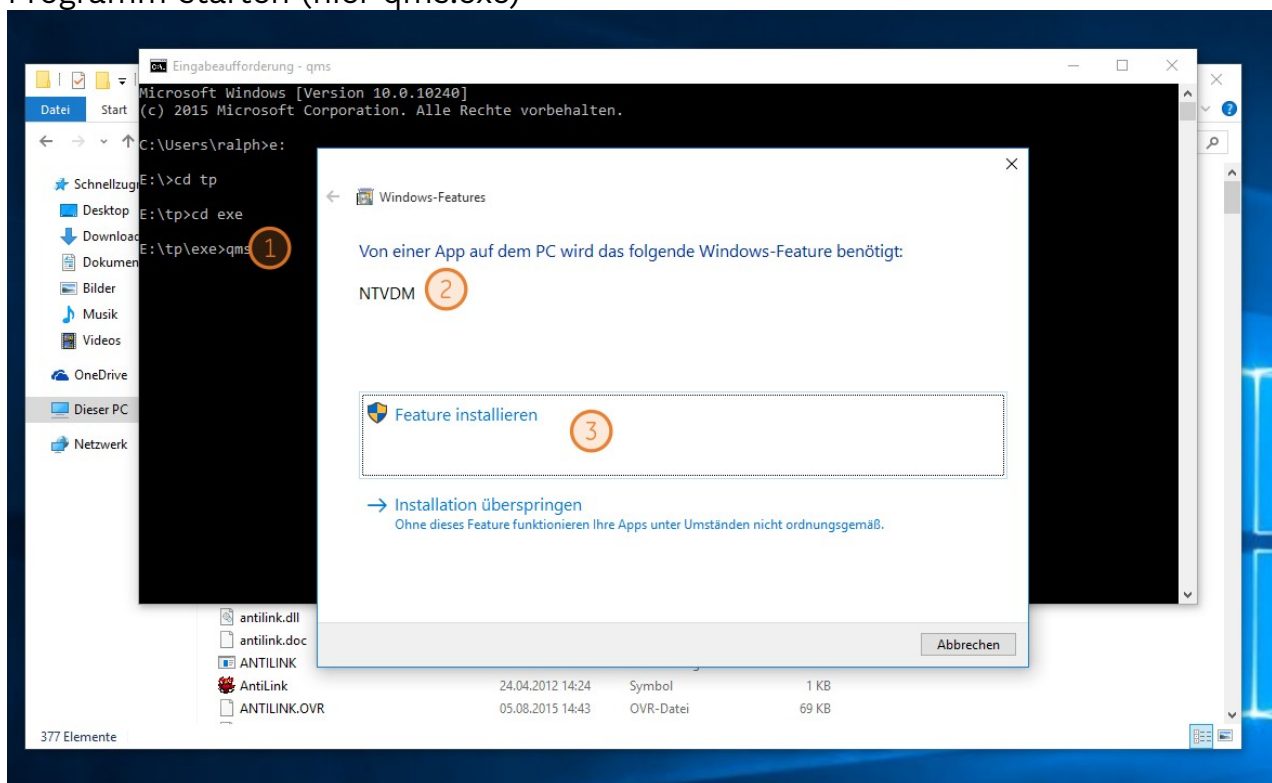
Mit **64-bit-Versionen** von Windows können MS-DOS-Programme nicht mehr von Haus aus verwendet werden. Also beispielsweise unter Vista, Windows 7,

Windows 8.x, Windows 10 in **64bit**-Version funktionieren keine MS-DOS-Programme - generell keine 16-bit-Programme, also auch nicht die meisten Windows-Programme, die bis Windows 3.1 eingesetzt wurden. Beispielsweise unter Windows 7, Windows 8 oder Windows 10, **32-bit**-Version funktionieren MS-DOS-Programme mit Einschränkungen; also beispielsweise nicht im Vollbild-Modus, aber ansonsten meistens problemlos.

Zusammen mit Windows 10 wurde auch die Eingabeaufforderung / CMD leicht überarbeitet und diese bekam, die von vielen gewünschte Copy und Paste Funktionalität über Tastatur-Befehle.

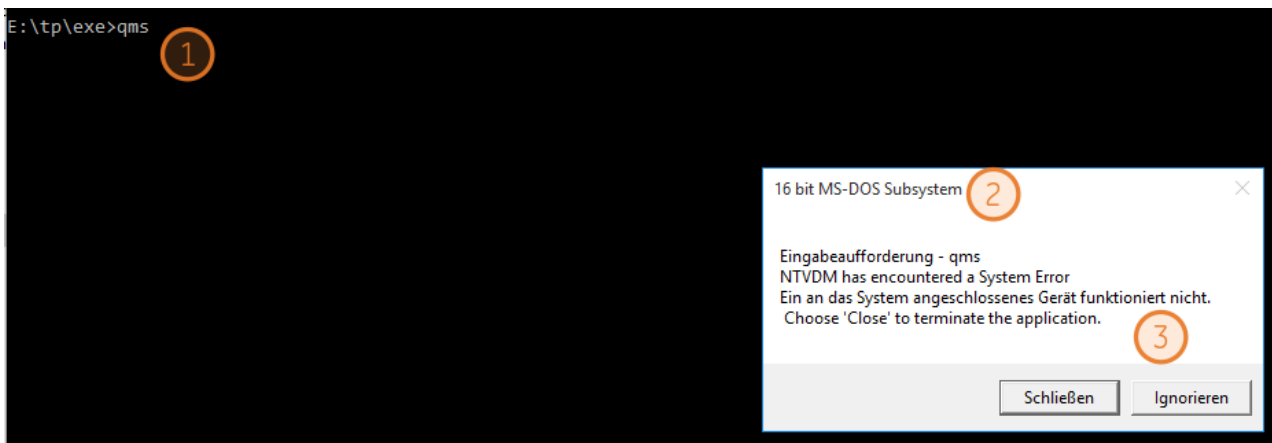
Schritt Eins – Installation der NTVDM

Einfach Eingabeaufforderung starten (CMD.EXE) und ein beliebiges DOS Programm starten (hier qms.exe)

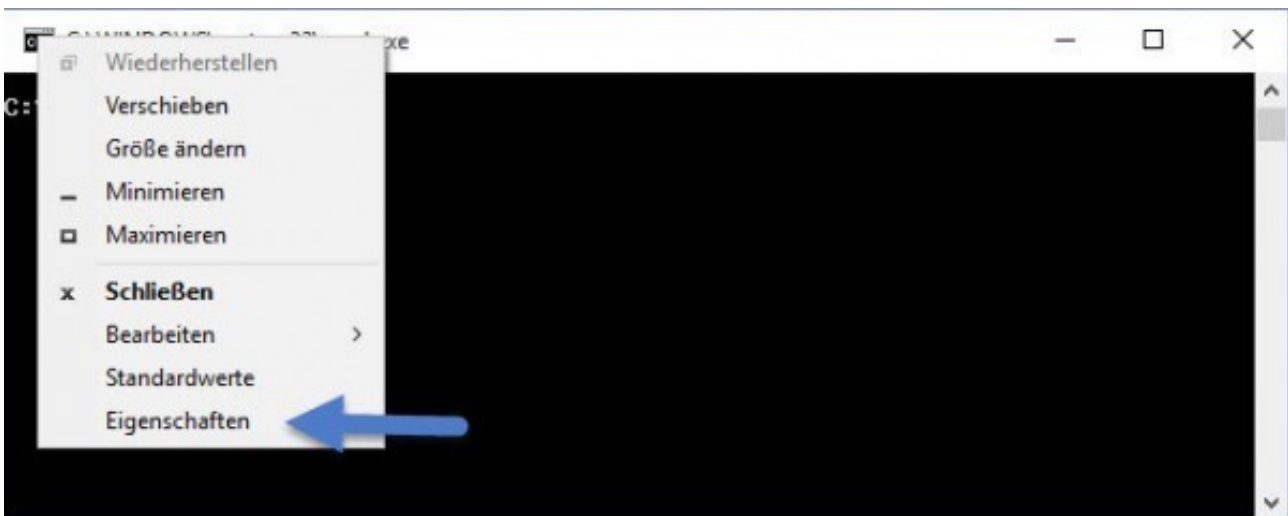


Schritt Zwei – Legacy Console aktivieren

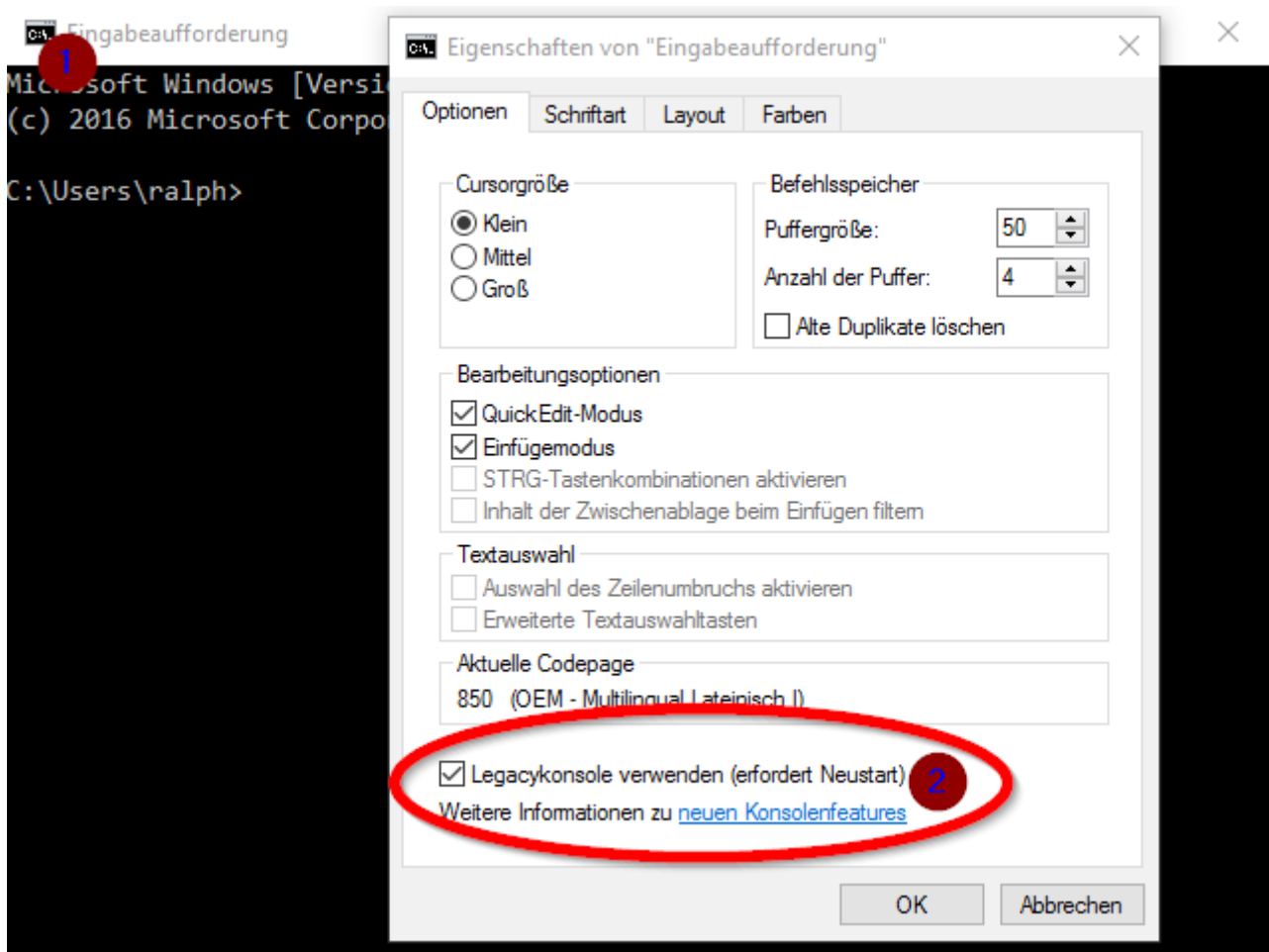
Trotzdem können DOS Programme nicht gestartet werden und brechen mit folgender Fehlermeldung ab:



Auf Schließen drücken.



Rechtsklick auf das kleine Eingabeaufforderung Icon links oben und „Eigenschaften“ auswählen.



Unter Optionen die Option „**Legacykonsole**“ aktivieren. Bestätigen und die Eingabeaufforderung beenden und neu starten. Fertig!

Siehe auch: <https://newyear2006.wordpress.com/2013/09/15/nochmal-zum-thema-16-bit-programme-unter-windows-8-1-32-bit-und-wie-verhlt-es-sich-mit-fondue-exe-und-den-legacykomponenten/>

Pointers/Web Pages

Links to other DOS emulators etc.

- <https://dosbox-x.com/> (extended DOS-Box) → <https://github.com/joncampbell123/dosbox-x> Downloads: <https://github.com/joncampbell123/dosbox-x/blob/master/INSTALL.md>
- <https://www.dosbox.com/> (DosBox 0.74, Windows, Linux, MacOS etc.)
- <http://vdosplus.org/> vDOS Plus (only for Windows)
- <http://www.dosemu.org/> DOSEMU (only for Linux)

/Ende/